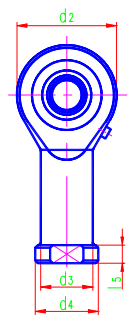
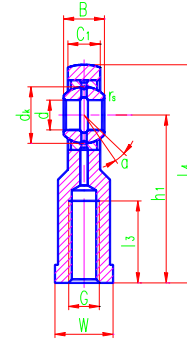
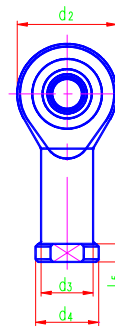
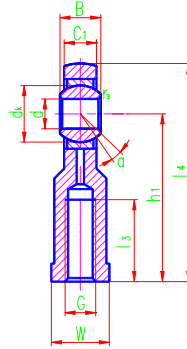




Rod ends



SI...E

SI...ES

Sliding contact surfaces: Steel / Steel

Bearing number	Dimensions mm															Load Ratings kN		Weight ≈kg
	d	B	d _K	C ₁ max	d ₂ max	G 6H	h ₁	l ₃ min	l ₄ max	l ₅ max	W	d ₃ max	d ₄ max	r _s min	α° ≈	Dynamic	Static	
SI5E	5	6	10	4.5	21	M5	30	11	40.5	5	10	10	13	0.3	13	3.4	8.1	0.016
SI6E	6	6	10	4.5	21	M6	30	11	40.5	5	11	11	13	0.3	13	3.4	8.1	0.017
SI8E	8	8	13	6.5	24	M8	36	15	48	5	13	13	16	0.3	15	5.5	12.9	0.035
SI10E	10	9	16	7.5	29	M10	43	15	57.5	6.5	16	16	19	0.3	12	8.1	17.6	0.061
SI12E	12	10	18	8.5	34	M12	50	18	67	7	18	19	22	0.3	10	10	24.5	0.096
SI15ES	15	12	22	10.5	40	M14	61	21	81	8	21	21	26	0.3	8	16	36	0.162
SI17ES	17	14	25	11.5	46	M16	67	24	90	10	27	25	29	0.3	10	21	45	0.233
SI20ES	20	16	29	13.5	53	M20×1.5	77	30	103.5	10	30	28	34	0.3	9	30	60	0.324
SI25ES	25	20	35.5	18	64	M24×2	94	36	126	12	36	35	42	0.6	7	48	83	0.625
SI30ES	30	22	40.7	20	73	M30×2	110	45	146.5	15	46	42	50	0.6	6	62	110	0.976
SI35ES	35	25	47	22	82	M36×3	125	60	166	15	55	48	58	0.6	6	79	146	1.52
SI40ES	40	28	53	24	92	M39×3	142	65	188	18	60	52	65	0.6	7	99	180	2.06
SI45ES	45	32	60	28	102	M42×3	145	65	196	20	65	58	70	0.6	7	127	240	2.72
SI50ES	50	35	66	31	112	M45×3	160	68	216	20	70	62	75	0.6	6	156	290	3.57
SI60ES	60	44	80	39	135	M52×3	175	70	242.5	20	80	70	88	1	6	245	450	5.63
SI70ES	70	49	92	43	160	M56×4	200	80	280	20	85	80	98	1	6	313	610	8.33
SI80ES	80	55	105	48	180	M64×4	230	85	320	25	95	95	110	1	6	400	750	13.04

“L” “ ” SIL20ES M20×1.5-6H

For left-hand thread, suffix “L” is added to bearings number and thread sign e.g. SIL20ES M20×1.5L-6H